



PGA

Nebraska Section

March 2019

INSIDE 5 THINGS TO KNOW:

- Flood Relief
- Junior Golf News
- Tournament Schedule
- Player Development Rentals
- Career Consultant Update

PGA Disaster Relief Fund



PGA Professionals affected by the recent flooding in the Midwest can apply for assistance from the [PGA Disaster Relief Fund](#). Golf industry personnel affected directly by qualified natural disasters should seek assistance through the [Golf Relief and Assistance Fund](#).

Officers

President

Nathan Kalin, PGA
Fremont Golf Club
nathan.kalin@fremontgolfclub.org

Vice President

Gil Russell, PGA
Norfolk Country Club
gilrussell@norfolkcountryclub.biz

Secretary

Dawn Neujahr, PGA
Champions Run
dneujahr@championsomaha.com

Honorary President

Tony Pesavento, PGA
Omaha Country Club
tpesavento@pga.com

Staff

Executive Director/CEO

David Honnens, PGA
dhonnens@pgahq.com

Tournament Director

Sean O'Neill, PGA
soneill@pgahq.com

Director of Nebraska Junior Golf/ Player Development

Seth Scollard, PGA
sscollard@pgahq.com

Operations Manager

Renee Tyson
rtyson@pgahq.com

Development Officer

Bob Danenhauer
bdanenhauer@pgahq.com

Tournament Assistant

Kurt Karcher
kkarcher@pgahq.com

Table of Contents— March 2019

OFFICIAL PUBLICATION OF THE NEBRASKA PGA SECTION

Flood Relief & Assistance	Pg. 3
Noor Ahmed Golf Digest Article	Pg. 4-5
Jr. Golf News	Pg. 6-7
Membership Matters	Pg. 8-9
Tournament News & Schedule	Pg. 10-11
Tournament News & Player Dev Rentals	Pg. 12-13
Career Consultant Update & Spring Meeting	Pg. 14-15
Special Awards Spotlight	Pg. 16-17
Rule Tip	Pg. 18-19
Member Updates & April Birthdays	Pg. 20-21

Contact the Section

Nebraska PGA
610 J Street, Suite 10
Lincoln, NE 68508

Phone: (402) 489-7760

Fax: (402) 489-1785

E-mail: nebraska@pgahq.com



Golf Relief and Assistance Fund Available to Aid Victims of Midwest Flooding

Fund Originated by the PGA of America Helps Golf Industry Personnel
Affected by the Flood and Future Qualified Natural Disasters

PALM BEACH GARDENS, Fla. (March 22, 2019) – The Golf Relief and Assistance Fund was created by the PGA of America to help golf industry personnel affected directly by qualified natural disasters. Administered by the largest community foundation in the world, Silicon Valley Community Foundation, of Mountain View, California, the fund is available to aid those dealing with the devastating flooding in the Midwest.

The fund—launched by the PGA in 2017, with an initial contribution of \$250,000—is designed to support both PGA Members and non-members who work in the industry. Since its inception, the Golf Relief and Assistance Fund has helped golf industry members affected by qualified natural disasters.

“The Golf Relief and Assistance Fund is a model that has shown how the golf industry helps one another in times of need,” said PGA President Suzy Whaley. “As these devastating floods affect America’s heartland, we turn to PGA Professionals to spread the word about the availability of this fund to anyone in the golf industry who needs assistance.”

To either make a tax-deductible contribution to the Golf Relief and Assistance Fund or to apply for assistance, please visit GolfReliefFund.org.

About Silicon Valley Community Foundation

Silicon Valley Community Foundation advances innovative philanthropic solutions to challenging problems. As the largest community foundation in the world, we engage donors and corporations from Silicon Valley, across the country and around the globe to make our region and world better for all. Our passion for helping people and organizations achieve their philanthropic dreams has created a global philanthropic enterprise committed to the belief that possibilities start here. Learn more at [siconvalleycf.org](https://siliconvalleycf.org).

About the PGA of America

The PGA of America is one of the world’s largest sports organizations, composed of PGA Professionals who daily work to grow interest and participation in the game of golf. For more information about the PGA of America, visit PGA.org, follow @PGA on Twitter and find us on Facebook.

Media Contact:

Michael Abramowitz, PGA of America 561/624-8458 mabramowitz@pgahq.com
Jared Minski, Mastro Communications, Inc. 732/469-5700 jared@mastrocomm.com

Noor Ahmed: An American Muslim observing the hijab, playing golf



Noor Ahmed has seldom gone unnoticed in her life, first impressions generally her bane. Her name alone was enough to attract attention. So was the hijab she began to wear as a seventh grader. In high school, she drove a '98 Ford F150 pickup with a stick shift and more miles on it than a trusty old putter, while still wearing the hijab and often as not headed to the golf course.

Then it was off to college, to the heartland, the University of Nebraska-Lincoln. "Here I definitely stick out like a sore thumb."

First impressions are what they are, visceral reactions often untethered to reality. Ahmed, an American Muslim, has experienced the gamut of them, from indifference and curiosity to hostility and racism.

Whatever connotations one assigns to a hijab, a traditional head covering for Muslim women, they would do well to avail themselves of a second impression of Ahmed.

"I honestly can't say enough positive and wonderful things about Noor," Kelli Corlett said. Corlett was one of Ahmed's life skills coaches at The First Tee of Greater Sacramento and was her chaperone when Ahmed was invited to speak at the First Tee Congressional Breakfast in Washington, D.C., two years ago.

"She's poised. She's certainly an incredible golfer. She's extremely intelligent. She understands what it means to be a good person. She puts others first. She's an absolute joy to be around."

This is not an outlier opinion of Ahmed, a sophomore on the women's golf team at Nebraska and believed to be the first Muslim to play college golf observing the hijab.

"She is an impressive young woman," Nebraska coach Robin Krapfl said via email. "I know she feels a responsibility to be a good role model for younger Muslim girls, but there is no doubt she is. I'm proud of her for embracing that responsibility and for the maturity she displays facing challenges she has to deal with on a daily basis."

Ahmed is the daughter of Egyptian parents, who emigrated to the United States. Her father, Tamer, arrived with her grandfather, who was fleeing political persecution. Noor was born in Austin, Texas, but the family settled in the Sacramento area, where Tamer is a civil engineer with the California Department of Corrections and Rehabilitation and Noor's mother, Hoda, is an elementary school teacher.

Noor's parents encouraged her and her younger brother Yusuf to pursue sports—"athletics in general is a big part of Egyptian culture," she said—and their home on the seventh hole of Empire Ranch Golf Club in the Sacramento suburb of Folsom, was enticingly convenient.

She took the game up, though she was not living under par so much as under the illusion that golf was supposed to be fun. Or easy.

"I was 8. I hated it," she said. "It was so hard. It was aggravating for me. Golf is the most humbling sport. It took me awhile to learn that golf is a sport in which you get out of it what you put into it."

She wanted to quit, but Dad said no. "If you want to be good at something you have to keep trying," he told her. She began setting small goals, easier to achieve, and "fell in love with the process of investing and getting a return."

It helped, too, that her father provided incentives, like letting her get a cell phone were she finally to beat him. "Being a fourth grader, that was the best thing ever. I worked really hard for five or six months, and I beat him." Next, he promised her a smart phone once she broke par. She earned that, too.

Ahmed's interest in the game expanded to include the LPGA, where she joined the legions who were fans of Lorena Ochoa. She attended the CVS Pharmacy LPGA Challenge one year and when play backed up on a tee box, Ochoa came over, said hello to her and offered her a sandwich. She declined. "I was too shy," she said.

That was an understatement. The bullying started in kindergarten and carried on through elementary school and into middle school. "Growing up, I've been told pretty straight up that people who look like me don't belong in this country," she said. "I've heard every racial slur in the book."

Classmates who befriended her only for the help she could provide them with their school work abandoned her when they no longer needed her. Depression and anxiety followed and she "felt worthless," she said.

Then came the hijab. "I think it is an obligation for women to dress modestly. That is how some women choose to do that. I started wearing it the middle of the seventh grade. It felt like the right time. I didn't talk to anybody about it. I didn't talk to any of my family about it. I didn't want any influence. I wanted to do it at the right time, and it felt right."

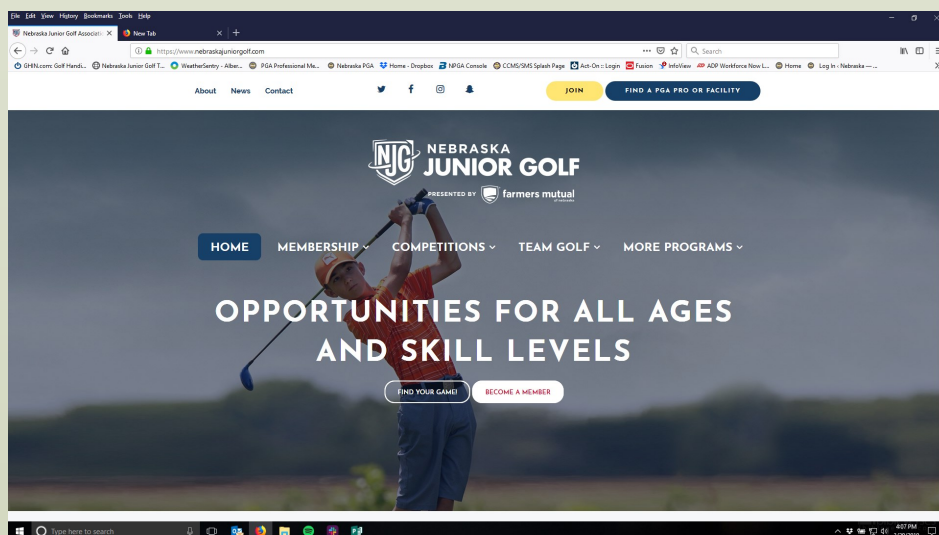
The reaction likely was predictable. She lost friends over it, though over time some realized that she was the same person dressed differently. Meanwhile, she began to question "whether being an American and Muslim were antithetical," she said in a speech she gave at the First Tee Congressional Breakfast.



[Continue Reading](#)



New Nebraska Junior Golf Website!



Visit us at www.nebraskajuniorgolf.com



Registration for the 2020
Drive, Chip & Putt is now
OPEN!

To register [**CLICK HERE**](#)

Local Qualifiers:

Hillcrest Country Club, Lincoln—Saturday, June 1, 2019

Oak Hills Country Club, Omaha—Sunday, June 30, 2019

Riverside Golf Club, Grand Island—Friday, July 12, 2019



FOLLOW US!



Membership Matters

Watch Presentations; Earn MSR Credits



You can earn PGA Education MSR credits by [watching presentations](#) recorded during the 2018 and 2019 PGA Merchandise Shows and successfully completing assessments at the conclusion. The 2018 seminars will remain available on PGA.org through 5 p.m. on April 12.

Pre-Register for the 2019 PGA Fashion & Demo Experience

Save the dates and [pre-register to attend](#) the 2019 PGA Fashion & Demo Experience, Aug. 12-14, in Las Vegas.



Prepare for Dues Billing on May 1

Make any changes to your personal data - email, mailing address, Section affiliation, classification and employment - through the [online change form](#).

Contribute to the PGA Disaster Relief Fund



Help PGA Professionals who have been affected by the recent flooding in the Midwest. You can also apply for assistance from this fund, supported exclusively through contributions from PGA Members. [Access information](#) about this fund and the [Golf Relief and Assistance Fund](#).

Membership Matters

PGA.Coach Dedicated to Developing Lifelong Golfers



Start your journey with PGA.Coach virtual training, and gain access to all of the tools you need to create passionate students and life-long golfers. PGA Members will be eligible to earn 3 MSR credits for completing the virtual training.



PGA Coach Certifications

Mark Baumann, PGA

Joe Canny, PGA

Alex Janssen, PGA

William Keane, PGA

David Scheider, PGA

Robert Thomason, PGA

Karrie Van Ravenswaay, PGA

PGA Members Listed Among Top 100 Teachers in America

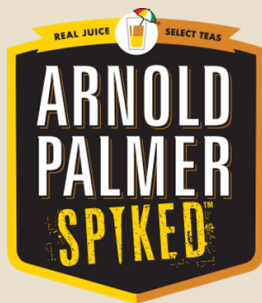
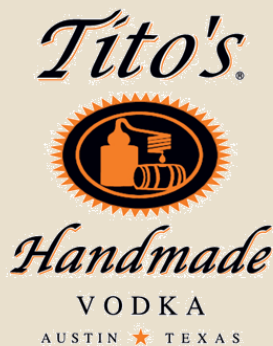
Seventy-one PGA Members were recently named to GOLF Magazine's Top 100 Teachers in America franchise for 2019. Among the new additions to the Top 100 list is PGA President Suzy Whaley, PGA/LPGA.



Tournament Registration Opens April 1

To register for tournament play, please visit our website for all the registration links. [HERE](#) Registration will be available at **NOON** on Monday, April 1.

Announcing New 2019 Partners



Tournament Schedule—2019

DATE	GOLF COURSE
4/8	Tiburon 27 Hole Pro Am
4/15	Players Club Pro/Pro/Pro
4/25	Legends and Young Guns Classic at Highlands GC
4/29	Oak Hills Country Club Pro Am
5/6	Fremont Golf Club Pro Am
5/13	Iron Horse GC Pro-Pro
5/20	Dakota Dunes Country Club Pro Am
5/28	Pro/Assistant Championship at Oak Hills Country Club
6/10	Yankee Hill Country Club Pro Am
6/17	Happy Hollow Club Pro Am
6/22-6/23	Green Valley 36 Hole Pro Am
6/27	Pinnacle Bank Qualifier at ArborLinks
7/1	Golf FORE! The Troops at Wilderness Ridge
7/8	Nebraska PGA Assistant Champ at Happy Hollow Club
7/8-7/9	Nebraska PGA Senior Champ at Happy Hollow Club
7/15	Pinnacle Bank Monday Qualifier
7/29	Firethorn Golf Club Pro Am
8/5-8/6	Nebraska Section PGA Championship at ArborLinks
8/12	Hillcrest Country Club Pro Am
8/19	PGA REACH - Nebraska Pro Am (invitation only)
8/26	Quail Run Pro/Pro
9/3	Bent Tree Pro Am
9/9	TBD Pro Am
9/13-9/15	Wells Fargo Nebraska Open at Elks Country Club
9/23	Team Championship at Wild Horse Golf Club
9/30	Country Club of Lincoln Pro Am
10/7	Vinnie Krikac Cup Series at Quarry Oaks (invitation only)
10/11	Legends of Golf Classic at The Pines Country Club
season long	MATCH PLAY CHAMPIONSHIP
season long	Assistants MATCH PLAY CHAMPIONSHIP

Tournament Guidelines Changes for 2019

- Entry fees will increase \$10 across the board
 - \$3 Course Fees
 - \$7 Section Admin
- Professional Only Team events
 - Removal of individual purse/POY points
 - Team purse only
 - Portion of every entry fee will go towards individual skins
- Match Play Championship
 - No deferred payment
- Senior Tees
 - Now 3%-5% of regular yardage for Team events

[See the full 2019 Tournament Guidelines](#)

Direct Deposit Enrollment



We are asking for ALL of our Nebraska Section Members and Associates who play in any Section events to please enroll in our ACH Direct Deposit Service.

[Sign Up HERE](#)

Player Development—Rentals

The Nebraska Section PGA will have the following items for rent this year. All Rentals are \$100 plus tax.

Rental bookings will begin on April 1, 2019.

To reserve your rental, contact Renee Tyson at rtyson@pgahq.com or 402-489-7760

RENTALS AVAILABLE



GOLFZILLA

**GOLFRILLA
AVAIL 5/1**



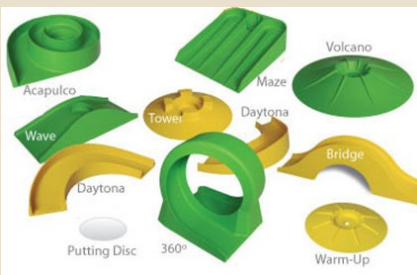
KWIK GOLF

PUTTSKEE



SPOKE TARGET

SNAG



**MINI
GOLF**



**HACK
GOLF**

Career Consultant Update

From the Field: September Member Update Jeff "JD" Drimel, PGA - PGA Career Consultant



Dear District 8 PGA Members & Friends,

First and foremost, our thoughts and prayers to all our fellow Members who are currently affected by the terrible floods, as well as to those who may be preparing for the same. We live in a wonderful region, but that region also has its' challenges when we have heavy rains, lots of snow and the spring melting begins.

Please remember that the PGA of America has the Disaster Relief funds that can assist you in a small way. More importantly, please reach out...we are here to help you in any way we possibly can. ALL our Section Staff Members, Leaders and fellow Members are here to help. God Bless.

Spring Positions -

We have a few positions in golf that may be of interest to our Members. A couple of them, Toad Valley, Lacoma Golf and Fredricks Peak, are posted on Career Links.

Toad Valley GC (Iowa) – This Public facility, southeast of Des Moines, is looking to hire their very first PGA Professional in 47 Years! The family owned facility is all about FUN! The person applying for the Head Golf Professional here should be able to inspire, and conduct, FUN at the facility. This position is on Career Links.

Lake Creek CC (Iowa) - In partnership with Buena Vista University, this is a DUAL position. One is the GM at the golf facility and the other is the Head Golf Coach for the Men's team at the University. It is important to note that the successful candidate will be part of the University system and enjoy all the benefits including tuition breaks.

Valleywood GC (Minnesota) – Located in Apple Valley, MN, just south of Minneapolis, this is a position with the City as a Division Specialist. Reporting to the Golf Course Manager, this position will assist in all aspects of the operation and could ultimately lead into a long-term amazing opportunity.

Fredrick's Peak (Valentine, NE) – First time posting for this 10-hole facility in the Sand Hills. Position is on Career Links.

Lacoma Golf (Quad Cities, IL) – Professional left for another position and they are looking to fill. Position is on Career Links.

Enjoy the opportunities and apply directly as stated in the attachments.

JD Drimel, PGA
PGA Career Consultant
Serving the Iowa, Minnesota and Nebraska Sections
561-386 -7715 Cell
Jdrimel@pgahq.com

Spring Meeting 2019

Special Award Winners



Back Row Pictured left to right: Jim White, PGA MP; Dawn Neujahr, PGA; Mark Baumann, PGA; Ryan Vermeer, PGA; Matt Nice, PGA; Chris Thomson, PGA
Front Row Pictured left to right: Nathan Kalin, PGA; Joe Canny, PGA; Brian Winge, PGA; Connor Farrell, PGA; Carly Ulrich, PGA; Steve Friesen, James Rolls, PGA
Not Pictured: James Kinney, PGA & Scott Holly, PGA



Linnet Carty—PGA of America Diversity & Inclusion Educator





Award Winners Spotlight

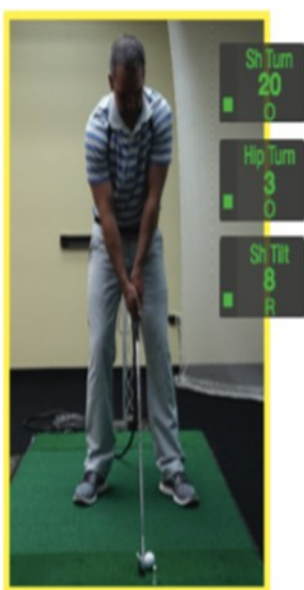
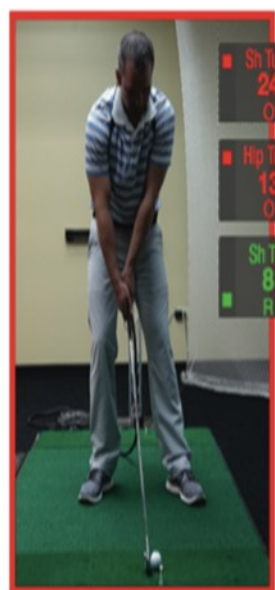


2018

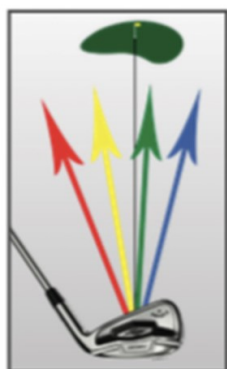
Teacher of the Year James Kinney, PGA

James Kinney, PGA Franchise Owner GolfTEC Omaha and City Manager
GolfTEC Overland Park

Swing Direction Improvement at the Setup



3D Club Path



The colored boxes around each of the four players represents the swing direction of the 3D club path that is shown in the second picture.

There are three factors that will help a player that is struggling with a path to the left of the target too much. The ball flight error would be a pull left, over fade, or heel contact.

The first factor is the handle location. Notice that the player in the red box has their hands away from the target and back of the golf ball resulting in the most leftward swing path. The player in the blue box has the handle location nearest to the target and more forward of the golf ball and the most rightward path. Helping a player move their hands forward or toward the target will help the swing path. The club shaft should be leaned forward and the lead hand should be positioned inside the lead thigh.

The second factor is the hip location. The players in the blue and green box have their hips shifted toward the target and 55% of their weight starting on their lead left side. That also will help the swing direction be moved to the right.

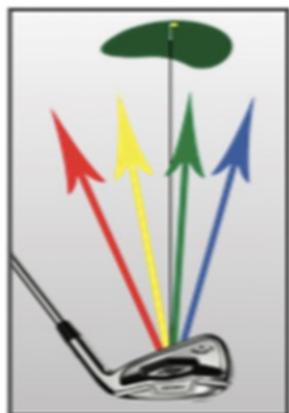
Finally, having the shoulders and hips more closed to the target will help move the 3D swing path to the right. The motion sensors on the players in the first picture are reading how the hips and shoulders are setup at the start position. "O" stands for open or facing the target and "C" stands for closed or away from the target.

Getting a game plan with a coach and measuring the club path with high speed video will give the player a fact based approach in correcting the swing path. Measuring how the body is aligned with a body motion system will take the guessing out of the equation and ensure faster improvement.

Swing Direction Improvement in the Finish position



3D Club Path



Notice the differences in the Turns, Shoulder Tilt, and Shoulder Bend. Also, recognize the differences in the exit of the shaft. Also note the turns and face angle relationship.

Measuring the the exit of the club in the finish position can keep students prevent their miss and develop a repeatable swing and their desired ball flight.

For players that over draw the golf ball they will have low shoulder turn and low hip turns and the exit will be higher over the left ear for a right handed golfer. The player in the blue body has a path that is too much in to out and can be a good guideline for teaching players that swing left and turn too much and exit low and left like the player in the red picture.

Players that bend their shoulders backward will produce a swing direction that goes more right resulting in a right to left ball flight. Tilting the shoulders more right like the player in the green picture and blue picture will also swing the most in to out. Overall the finish position is a key indicator to swing direction. A coach and measuring the body and swing path with video can guide the student quickly with a plan of attack.

Rule Tip of the Week **March Madness?**

Hey Rules fans, it's "March Madness" time again! No, not the NCAA basketball tournaments that take place this time of year, but rather the fact that you may be going mad trying to figure out the correct answers to the annual quiz issued by the Metropolitan Golf Association. The MGA issues its diabolical 25-question quiz in early-February, and its answers in mid-March. Here are three excerpts from this year's MGA quiz which can be found, along with the answers, at www.mgagolf.org/rules/quizzes.

1. In match play, a player's tee shot comes to rest on the putting green. He asks his caddie to attend the flagstick and makes a stroke at his ball. The player's ball hits his opponent's ball at rest on the green, then accidentally hits the caddie's foot and is deflected into the hole. The caddie removes the ball from the hole and the player plays from the next teeing area. What is the player's score for the hole? (a) 2 (b) 3 (c) 4 (d) The player incurs a loss of hole penalty.
2. A player decides to take unplayable ball relief from under a bush using the back-on-the-line option. He identifies the proper reference line without choosing a reference point. He drops a ball properly and it first touches the course six inches to the side of the reference line and then rolls forward three inches and comes to rest on the reference line itself. He then realizes that he still has line of play interference from the same bush. He therefore lifts the ball and moves 10 yards further back from the bush on the same reference line. He drops the ball properly and it comes to rest where it first touched the course, 12 inches to the side of the reference line. He plays the ball as it lies. How many penalty strokes has the player incurred? (a) 0 (b) 1 (c) 2 (d) 3
3. A player places a ball on a tee in the teeing area of a par-3 hole and makes a stroke. The ball is grazed, falls off the tee, but remains in the teeing area inches behind a tee-marker. The player moves the interfering tee-marker out of the way and substitutes another ball in place of the original. Thinking he may have violated a rule, the player replaces the tee-marker and re-tees the substituted ball elsewhere in the teeing area. The player hits the ball onto the green and one putts. The player's score for the hole is: (a) 3 (b) 4 (c) 5 (d) 6.



Answers:

1. (a) Rule 11.1 [Ball in Motion Accidentally Hits Person or Outside Influence] advises that if a player's ball in motion accidentally hits any person or outside influence, there is no penalty to any player, and this is true even if the ball hits the player, the opponent or any other player or any of their caddies or equipment. [Keep in mind that, in stroke play only, the player incurs a two-stroke penalty if his or her ball in motion hits another ball at rest on the putting green and both balls were on the putting green before the stroke.] Furthermore, the ball must be played as it lies. Rule 13.2b(2) [What to Do If Ball Hits Flagstick or Person Attending Flagstick] indicates that there is no penalty if the player's ball in motion accidentally hits the flagstick or the person who removed or is attending it, and the ball must be played as it lies.
2. (b) Rule 19.2b [Back-on-the-line Relief] indicates that if the player drops the ball without having chosen the reference point on the reference line, the reference point is treated as being the point on the line that is the same distance from the hole as where the dropped ball first touched the ground. Since the dropped ball rolled forward, the ball did not come to rest in the required relief area, and the player was required to drop a ball a second time pursuant to Rule 14.3c(2) [What to Do If Ball Dropped in Right Way Comes to Rest Outside Relief Area]. Interpretation 14.5b(3)/1 [Player May Change Relief Areas When Dropping Again for Back-on-the-Line Relief] advises that, when a player is required to drop a ball a second time after using back-on-the-line relief under Rule 19.3b [Unplayable Ball Relief], the player is allowed to change reference points so that the relief area is nearer to or farther from the hole.
3. (a) Pursuant to Rule 6.2b [Teeing Area Rules] and Interpretation 6.2b(6)/1 [Ball That Comes to Rest in Teeing Area Does Not Have to Be Played as It Lies], if a player's ball in play is in the teeing area after a stroke, the player may lift or move the ball without penalty and play that ball or another ball from anywhere in the teeing area from a tee or the ground, including playing the ball as it lies. Also, the player, by restoring the tee-marker to its original position, avoids being penalized for improving the area of her intended swing (see Rule 8.1c [Avoiding Penalty by Restoring Conditions Improved in breach of Rule 8.1a(1) or 8.1a(2)]).



Innovative Golf
Management Solutions

TEE-SHEET

CLOUD BASED

POINT OF SALE

ONLINE BOOKING

AUTOMATED MARKETING

INTEGRATED PAYMENT

MOBILE APP



Visit our website pro.chronogolf.com

Regional Sales Manager:

Ben Cruise

bcruise@chronogolf.com

Mobile – 402.881.7343

MEMBER UPDATES

EMPLOYEE	CLASS	CURRENT FACILITY	PREVIOUS FACILITY	PREV CLASS
Jacob Burling, PGA	A-8	Wilderness Ridge GC		

UPCOMING APRIL BIRTHDAYS

Name	Birth Date
Terrance P. Riordan, PGA	4/1
Robert A. Walker, PGA	4/2
Nick P. Wanderscheid, PGA	4/2
Mike R. Schuchart, PGA	4/6
Todd C. Boeve, PGA	4/7
Chad L. Manes, PGA	4/7
Robert G. Thomason, PGA	4/8
Scott M. Allacher, PGA	4/8
Bill Scarborough, PGA	4/11
Hank A. McFarland, PGA	4/11
Scott E. Martin, PGA	4/12
Nickolaus R. St. Onge, PGA	4/12
Gregory K. Gilg, PGA	4/13
Ky M. Molholm, PGA	4/14
Tom E. Nelson, PGA	4/15
Gerald Fitzpatrick, PGA	4/16
Jim B. White, PGA	4/16
Jonathan S. Beaver, PGA	4/16
Sean M. O'Neill, PGA	4/16
Michael E. Ryerse	4/20
Don Kruse, PGA	4/22
Britton R. Ward, PGA	4/23
Jon D. Petersen, PGA	4/24
Mitch Merrill, PGA	4/25
David M. James, PGA	4/25
Mike Cornell, PGA	4/26
Matthew K. Nelson	4/26
Jennifer A. Smith, PGA	4/28



Nebraska Golf and Turf

1440 Yolande Ave.
Lincoln, NE 68521

(800) - 535 - 2885
nebraskagolf.biz

Club Car

Tyler Schaaf

Territory Manager
Nebraska/Iowa/South Dakota
Mobile 402-301-4518

Email: tyler.schaaf@mizunousa.com



A Textron Company

For more information contact:
RANDY PRINCE
MILLER & SONS
GOLF CARS
Phone 402.659.8242
rprince@millergolfcars.com



SLEEKER? Yup
FASTER? Yup
MORE ACCURATE?
Ask the pros

NEW
TOUR V4

